

- Industry Standard 5x7 Package Size

Instrument Part Number: CTX7LZ - A3 B3 - 15.360

CTX7
SERIES
CTX7

L
VOLTAGE
Blank = 5V
L = 3.3V

Z
ADDED FEATURE
Blank = Bulk
Z = Tape and Reel

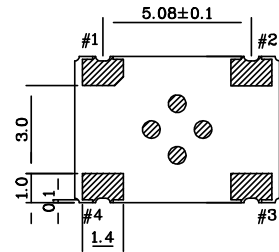
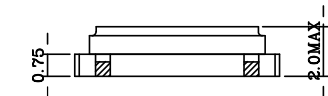
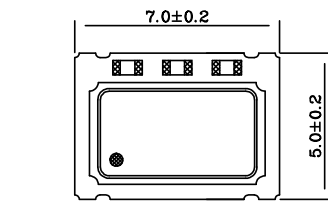
A3
OPERATING TEMP
A1 = -10°C ~ +50°C
A2 = -10°C ~ +60°C
A3 = -30°C ~ +75°C
A4 = -40°C ~ +75°C

B3
STABILITY
B1 = ±5.0PPM
B2 = ±3.0PPM
B3 = ±2.5PPM

15.360
FREQUENCY
8.0 ~ 50 MHz

Specifications:

Description	Min	Typ	Max	Unit
Frequency Range:	8.000		50.000	MHz
Available Stability Options:	-5.0	-	5.0	PPM
	-3.0	-	3.0	PPM
	-2.5	-	2.5	PPM
Output Format	Clipped Sine			
Output Peak to Peak:	1.0			V
Output Load:	10 kΩ parallel with 10 pf			
Input Voltage:	4.75	5	5.25	V
	3.135	3.3	3.465	V
Input Current	-	-	2.0	mA
Frequency Trim Range:	±3.0			PPM
Aging: ($T_A=25^\circ\text{C}$)		±5		PPM/Year
Voltage Stability: ($V_{DD}\pm 5\%$)	0.3	-	0.3	PPM
Operating Temperature Range:	-10	-	+50	°C
	-10	-	+60	
	-30	-	+75	
	-40	-	+75	
Tape and Reel Package Size:			1000	Unit/Reel



PIN CONNECTION
#1 V.C or N.C
#2 GND
#3 OutPut
#4 Vcc

Recommended soldering pattern

